



**VAJRA PROPERTIES**  
Promoted by **Gullapalli & Co**

**Brochure for VAJRA ENCLAVE**

**INDEPENDENT VILLAS @ SHAMEERPET, HYDERABAD**

***Price Starting from INR 59,00,000/-***



**For Sales Please Contact:**

**Call** : +91 9441229388  
**USA** : +1 248 505 8832 Contact: Mr.Ravi Gullapalli  
**E-mail** : vajraproperties@gmail.com

**Corporate Address** : Flat No. 1H  
Movva Nest Appartments  
NizamPet Road  
Kukatpally, Hyderabad.

## LOCATION MAP



## FLOOR PLANS



NORTH FACING UNIT



FIRST FLOOR PLAN

GROUND FLOOR PLAN

SOUTH FACING UNIT



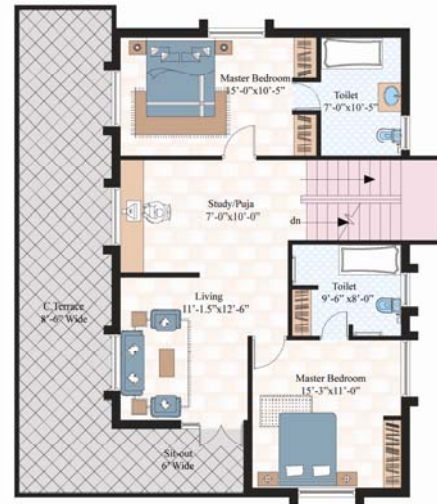
FIRST FLOOR PLAN

GROUND FLOOR PLAN

## WEST FACING UNIT



GROUND FLOOR PLAN



FIRST FLOOR PLAN

### AMENITIES & SALIENT FEATURES:

- Gated and secure community. **DTCP Approved Layout**
- 40ft and 30ft wide Black Top Roads
- One Generator for street lighting & Bore and another independent .Generator for Backup power
- Intercom facility for security.
- Club House with Gym and Swimming Pool.
- Extensive Landscaping
- Play Grounds with Children Play Area.
- Solar Street lighting.
- **ROS Plant and Manjeera** water, Bore water is supplied through sump and overhead tank.

### HOUSE SPECIFICATIONS:

STRUCTURE : R.C.C. Framed Structure

SUPER STRUCTRE : Good quality Bricks with cement mortar

DOORS : Main Door Teak frame with teak wood shutters, Internal with Flush door shutters.

WINDOWS : Aluminum Frames and shutters with mosquito net, M.S. Plain Safety grills 4mm thick glass.

INTERNAL WALLS : Cement plastered surface treated with luppam putty with plastic Emulsion.

EXTERNAL WALLS: Dubara sponge finished cement plastered surface with water Proof cement paint.

FLOORING : **2 X 2 Vitrified Tiles.**  
Anti skid ceramic tiles flooring for toilets.

KITCHEN : **Modular kitchen** with Faber hood and granite slab platform with Stainless steel sinks.

TOILETS : Johnson Ceramic tile dado up to 7'-0" Height.

SANITARY : CP fittings of **Jaguar** make and **Parry** sanitary ware or similar.

ELECTRICAL : Concealed piping with adequate points for power and light with North West switches.

TELEPHONE : Telephone & T.V. Points in two bedrooms & hall with colony intercom phone.

CEILING : **FALSE CIELINNG** in Hall and M.Bedroom.

STAIR CASE : Wooden Internal Staircase.

COMPOUND WALL: Separate Compound wall with gate for each Villa.